

FACADE INSULATION:

Sequence: wooden/metal beams are mounted on the facade then an insulation material is laid between them:

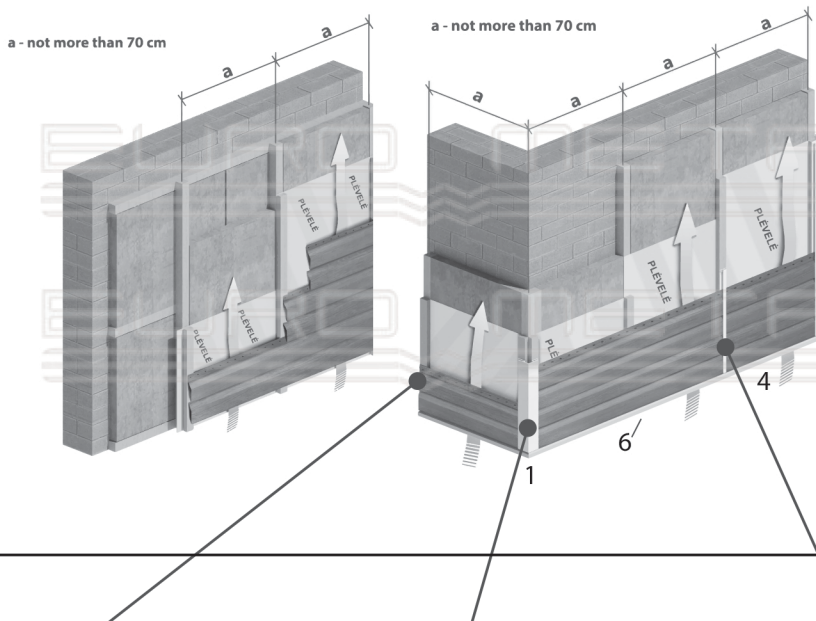
1. In the case of two-layer insulation, the top layer of insulation materials (which is laid vertically) must overlap junctures of the bottom layer which is laid horizontally.

2. In the case of single-layer insulation, the insulation material is mounted vertically. The width between beams should be chosen according to the width of insulation wool, to avoid not only additional work but also irrational use of materials.

Once the insulation material is mounted, then an anti-condensation film is laid, which protects the insulation from moisture. Then the 2-5 cm thick wooden beams are mounted vertically to separate the film from the panels. **THE GAP BETWEEN PREPARED FACADE AND SIDING PANELS IS REQUIRED.** The installation of ventilated facade must be relied on building technical requirements of the Republic of Lithuania.

1. TWO-LAYER THERMAL INSULATION

2. SINGLE LAYER INSULATION LAYER



MOUNTING OF SIDING PANELS:

The order of mounting SIDING is from the bottom to the top. The first panel at the bottom is mounted afixed the start profile.

If the bendings (for example corners) are with hidden fixing - it must be fastened earlier than panels.

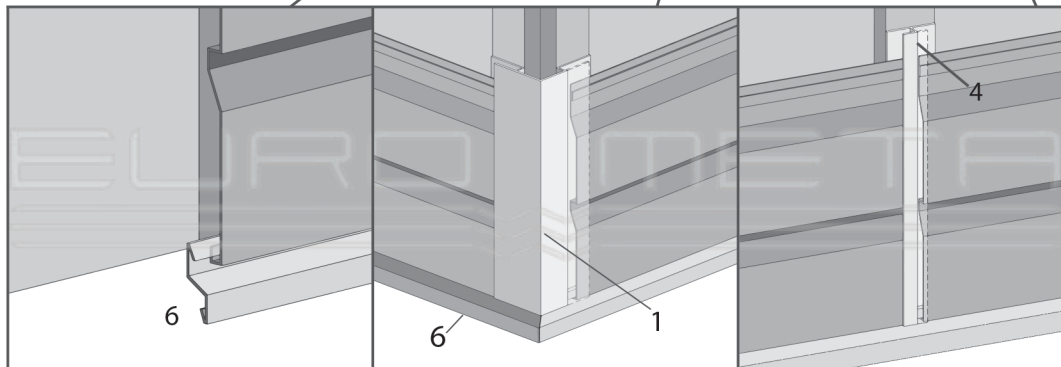
SIDING panels are fastened with various screws (wood screws, self-rotation screws with rubber gasket, etc.). If the holes that had been automatically knocked out during the manufacturing process do not coincide with prepared location of the screw rotation (the beam) - there is no need to worry - install screws through tin.

IMPORTANT:

NEVER use an abrasive discs. By using inappropriate tools, you lose your warranty. Small damaged surface is recommended to cover with corrective paints. Covering damaged areas, do not paint on the intact surface.

Steel panels SIDING can not be transported or stored with any load or cargo on top.

SIDING panels covered with a protective film can not be left and kept on direct sunlight, because it can complicate removal of protective film, also some adhesive residue can remain on the tin.



Steel panels SIDING can be lifted and transferred only by keeping its surface perpendicular to the ground.

Comply with work safety requirement at all stages of paneling.



UAB „Euro Meta“

Company code 300860750

VAT code: LT100003314614

Address: Pelkiu g. 58, LT-37454 Panevezys, Lithuania

Bank account number: LT507300010101370364

SWIFT code: HABALT22

Bank: „Swedbank“, AB

Phone: +370 684 083 43

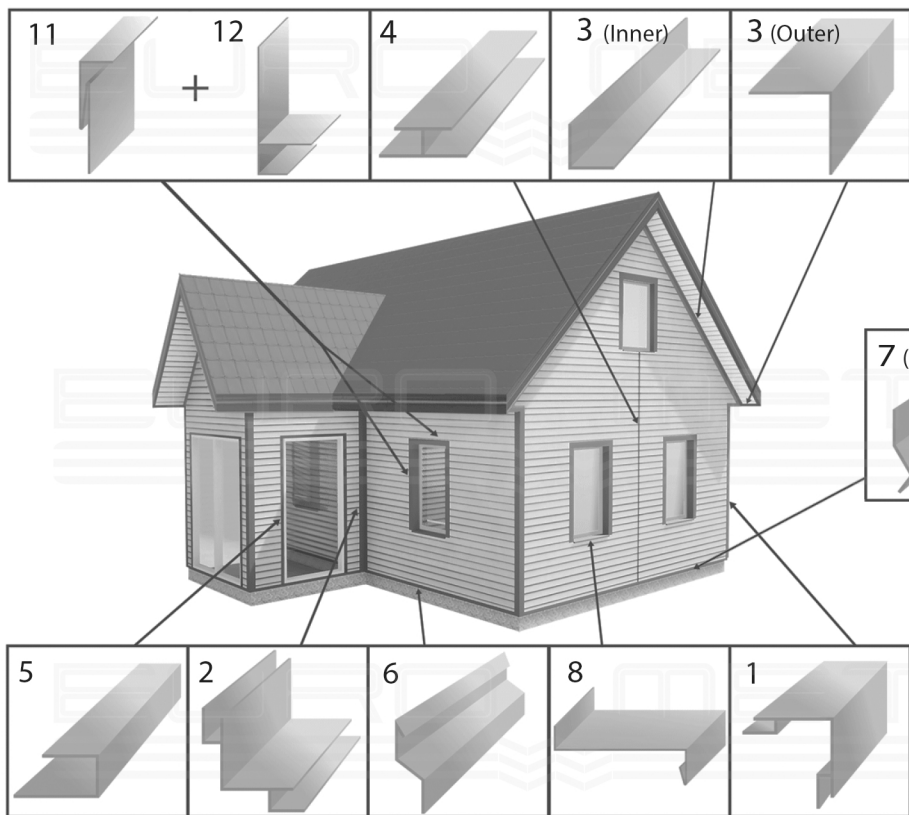
E-mail: info@eurometa.lt

siding@eurometa.lt

MORE INFORMATION: www.siding.lt

Instructions prepared according to the building rules of the Republic of Lithuania ST:121895674.205.20.02.01:2015 FACADE INSTALLATION. Installation of ventilated facades with mineral wool thermal insulation.

Euro Meta, UAB does not assume any liability for errors, inaccuracies or direct or indirect damage caused by incorrect application of information. The company reserves the right to change the information. For more information please contact us by phone or an e-mail.

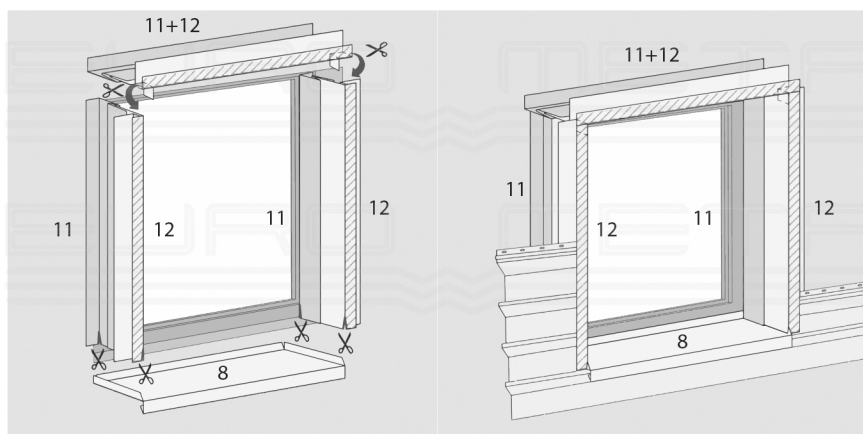


SIDING ACCESSORIES - BENDINGS:

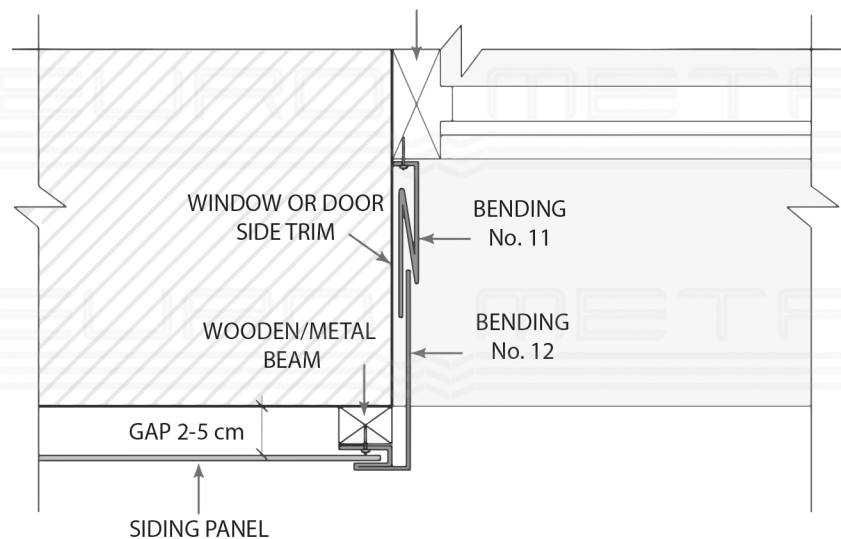
1. External corner hidden fixing
2. Internal corner hidden fixing
3. External/Internal corner
4. Connection detail
5. Finishing profile J
6. Start profile
7. Invisible start profile
8. Windowsill
9. Window/door side trim - NOT ADJUSTABLE
11. Window or door side trim / Element above the window or door - ADJUSTABLE. Part 1 (inner side)
12. Window or door side trim / Element above the window or door - ADJUSTABLE. Part 2 (outer side)

JOINING THE BENDINGS OF WINDOW OR DOOR SIDE TRIM:

All the elements with hidden fastening must be installed earlier than siding panels.

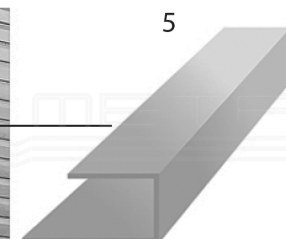


WINDOW FRAME

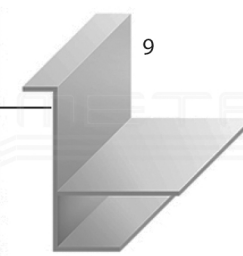


BENDED ELEMENT OF WINDOW OR DOOR SIDE TRIM CAN BE THREE TYPES:

1. FINISHING PROFILES J (Bending No. 5) – when the window frame coincides with the facade plane, in other words, when the window is not deepened or deepened only through the height of SIDING panel.



2. NOT ADJUSTABLE WINDOW OR DOOR SIDE TRIM ELEMENT (Bending No. 9) – when the window frame is deepened no more than 5 cm and the depth of the window side is exact same in all corners.



3. ADJUSTABLE WINDOW OR DOOR SIDE TRIMS / ELEMENTS ABOVE THE WINDOW OR DOOR (Bendings No. 11, 12) - are categorized according to the depth of the window side: up to 5 cm, up to 10 cm and up to 20 cm. These bendings trim up the window sides which are deepened uneven.

